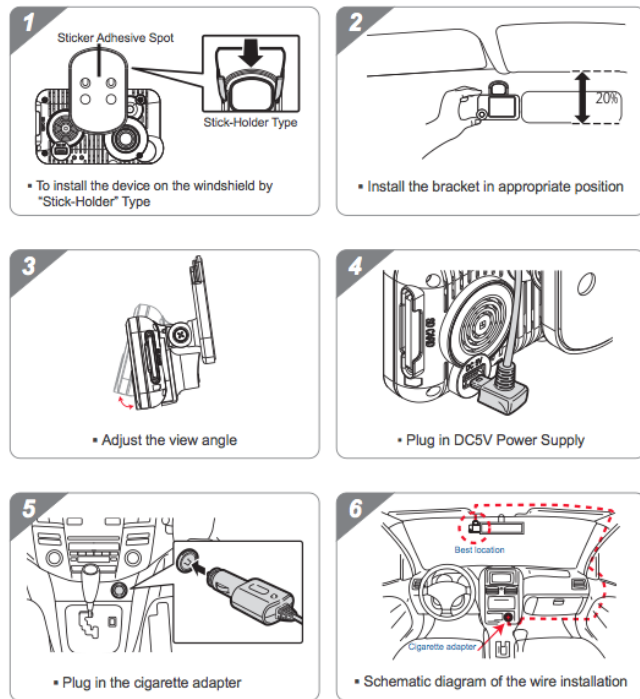
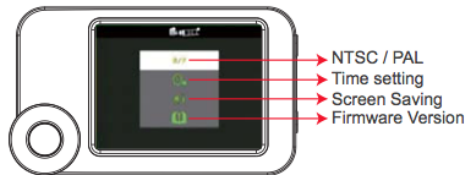


Installation Guide

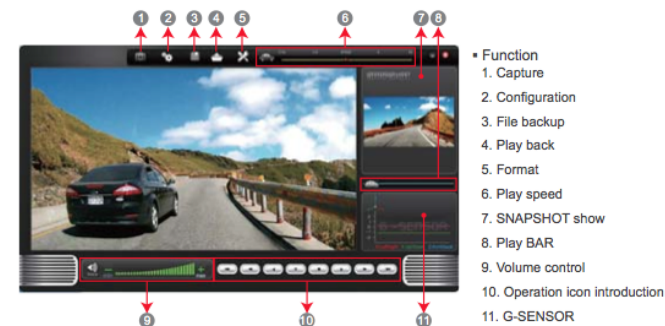


OSD Menu function



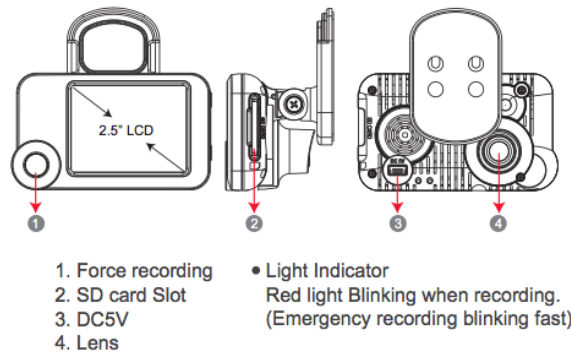
Visit the "Support" page of rostra.com to download PC Viewer Player.

Viewer Player



• To perform this software, please install Direct X 9.0 or above.

Structure of Product

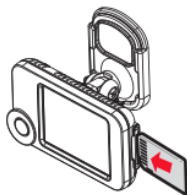


Remote Controller



Memory Card

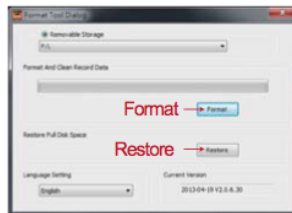
1. SD Card Installation



NOTE

- (1) If the memory card is not formatted by our exclusive player, the device will automatically erase all the data inside of the memory card after inserting it, start recording at default setting.
- (2) Please don't convert Micro SD to SD card to begin recording, to avoid the damage during recording.
- (3) Since memory cards have the writing endurance situation, we recommend to inspect the memory card and use pc for playback regularly, to ensure that the memory card can read and write.

2. 「Format / Restore」 SD card



NOTE

- (1). 「Format / Restore」 will clean all the data saved on SD card, Please back up the data before 「Format / Restore」.
- (2). Before 「Format / Restore」 SD memory card, please ensure to unlock it first.
- (3). If the card is unlocked but still cannot be formatted, this might be caused by Window Vista / 7 security restrictions. Please run the program as Administrator to prevent from this problem.

3. Record Time Estimation

Capacity	8G	16G	32G
Video Quality			
High	120 Min	240 Min	480 Min

* The chart of estimated record time listed below is for reference only.
The length of time recorded can be varied due to variation in image size may be somewhat different.

Vehicle Video Recorder FullHD Light and Compact

Rostra
Precision
Controls, Inc.



2013 V1.0

Safety Precautions

- Take and review some testing video initially to make sure the images were recorded correctly. Please note that manufacturer, its subsidiaries and affiliates, and its distributors are not liable for consequential damages arising from any malfunction of main device accessory, including memory device that results in the failure of an image to be recorded or to be recorded in a way that is machine readable.
- Before using the product, please ensure that you read the safety precautions described below. Always ensure that the product is used correctly.
- Use only recommended power sources.
- Do not attempt to disassemble, alter or apply heat to the product.
- Avoid dropping or subjecting the product to severe impacts.
- To avoid the risk of injury, do not touch the interior of the product if it has been dropped or otherwise damaged.
- Stop using the product immediately if it emits smoke, a strange smell, or otherwise behaves abnormally.
- Do not use organic solvents such as alcohol, benzene, or thinner to clean the product.
- Do not let the product come into contact with water (e.g. sea water) or other liquids.
- Do not allow liquids or foreign objects to enter the VVR.
- Do not place the VVR near or in direct flame.
- Do not handle the power cord with wet hands.
- Do not use the equipment in a manner that exceeds the rated capacity of the electrical outlet or wiring accessories.
- Do not use if the power cord or plug are damaged, or not fully plugged into the outlet.
- Do not allow dirt or metal objects (such as pins or keys) to contact the terminals or plug.
- Avoid using, placing or storing the product in the humid or dusty areas.

Specification

Items	Description
Sensor	CMOS
View Angle	105° Wide-angle
Resolution	NTSC 30fps / PAL 25fps
V / A	DC5V±5% / 1A
Operating tmp.	-10°C ~ +60°C
Display	2.5" TFT LCD
Storage	4GB SDHC Card or above (Recommend 「SanDisk」 or 「Transcend」 Class 10 or above)
Recording way	On start auto recording, stop recording when power off
Recording content	Date/Time/Image/Sound/G-Sensor data)
Storage Format	Special format, playing on LCD screen with remote control. Or specific Player bundled.
Audio Input	Built-in microphone
Time setting	Built-in permanent calendar with adjustable function through remote control or bundled Player
G-Sensor	Built-in 3D G-Sensor

★NOTE 1. Version updating is not going to inform, please check the on-going updating information
2. SD Card. (optional)

Accessories

- Standard** Adapter / IR remote control
Bracket / 3M sticker
- Optional** 4G / 8G / 16G / 32G Class10 or above SDHC Card