

Visit the "Support" page of rostra.com to download PC Viewer Player.



Rostra Precision Controls, Inc.

HD 720P / VGA 2CH

Vehicle Video Recorder



2012 AUG V 1.0




Feature

1. Suitable for all personal vehicle, taxi, bus, truck.....
2. Small size, easy installation and dismount, it does not affect the driver's line of sight.
3. Insert the card and power on to start recording without additional operating.
4. Simultaneously recording interior and exterior condition.
5. Having full time, date recording and display on the screen directly.
6. Recording driving condition, sound, G-Sensor and GPS data.
7. Front view angle approx. 120 degrees. Back view angle approx. 170 degrees.
8. Recording track of driving routes which can be shown on Google Map when we play the video.
9. Micro SD memory card Class 10 or above recommend.
10. G-sensor sensitivity can be adjusted according to road situations. When detect a strong shock, system will start emergency recording and keep the files without being overwritten.
11. Professional file formats, without built-in lithium battery, no needs to afraid of heat and bursting concerns, it is the real black box.

Accessories

- Standard** (a) 5V cigarette Power adapter (b) USB card reader
 (c) 4 pins, 3.5 inch headphone jack to RCA output cable.
 (d) Suction cup bracket (e) Bracket holder (f) Remote control
- Optional** (a) Micro SD card (4GB/8GB/16GB/32GB)
 (b) External GPS Mouse (4P Phone Jack Connect)

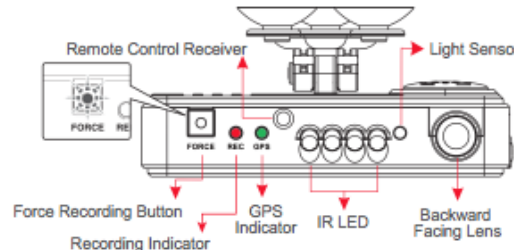
 1. When you use the Micro SD card at the first time, please format it firstly.
 2. Please don't take out the Micro SD card suddenly when connecting with power. It should be switch off first or it might are likely to cause the destruction of data.

Specification

Chipset	H.264 image compression chip
Sensor Device	Forward facing lens: 720p CMOS Sensor Backward facing lens: VGA CMOS Sensor.
View Angle	Outside vehicle approx : 120 degree Inside vehicle approx : 170 degree
Voltage	Please use 5V±5%, 1A Cigarette lighter adapter. The machine needs 4.7v to start.
Operating Temp	-15°C~+55°C (Inside Vehicle).
Storage Device	Micro SD Card (4G/8G/16G/32G) . 4GB/Class 10 or above specification is available.
Recording Frame	Forward facing lens: 1280x720; Highest resolution: 30fps/25fps (NTSC/PAL) Backward facing lens: 640x480; Highest resolution: 15fps/15fps (NTSC/PAL) Auto record when power up system; backward facing lens can be closed by setting of software.
Recording Content	Date, time, image, sound, G-sensor data, GPS data.
Recording Format	Specific format for software player.
Microphone	Build-in high sensitivity of single microphone for automatic voice adjustment.
Time Setup	Auto-calibrating by GPS signals. If GPS is not available, the built-in clock will be used.
G-Sensor	Internal 3D G-Sensor.

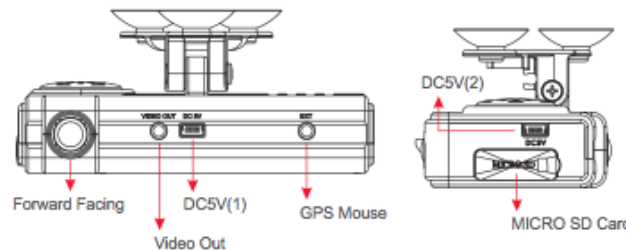
★ Version updating is not going to inform, please check the on-going updating information


Structure of Product



Definition of Indicator

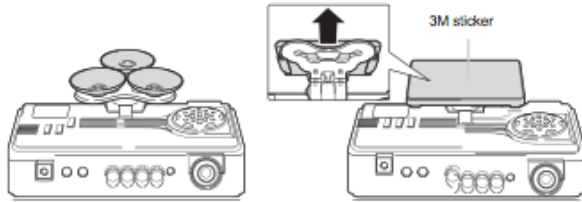
- Force record button: good for using at night
- Red indicator of REC:
Stable flicker of red indicator: On recording
Fast flicker of red indicator: Force recording
- Green indicator of GPS positioning:
Flicker of green indicator: GPS 3D positioning
Steady of green indicator: GPS 3D positioning accomplished.



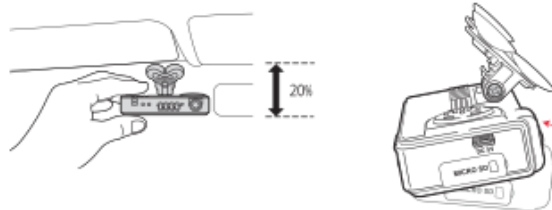
 Please do not plug the power in both micro-USB terminals. The machine might be damaged.

Installation Guide

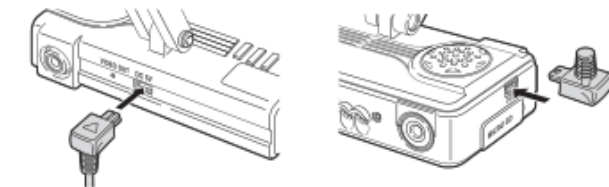
1. Select Suction-cups or Stick-Holder type Bracket.



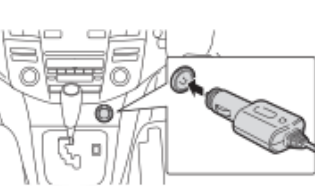
2. Install the bracket in appropriate position 3. Adjust the view angle



4. Plug the power cable to socket on DC 5V, please do not plug in both sockets at the same time)



5. Plug in the cigarette adapter.



6. Schematic diagram of the wire installation.



Important Notice

- (a) Machine must be installed in the area that wipe can be reached.
- (b) If not use the player to format memory card, the machine will force to format the entire memory card and then start recording.
- (c) It's better not crossing the top of the machine and the left side of GPS. We suggest to put the cables via the right side of the VVR and then connect to the ceiling to get better GPS signal.
- (d) Memory card has the number of reading and life issues, please check and use the computer to play video regularly in order to make sure the memory card can read and write properly.

Visit the "Support" page of rostra.com to download PC Viewer Player.

PC Viewer Player

Start the program (you can locate it in the CD-R).
The main screen will be like the picture below.



- Note**
- To perform this software, please install Direct X 9.0 or above.
 - Please see the operation manual

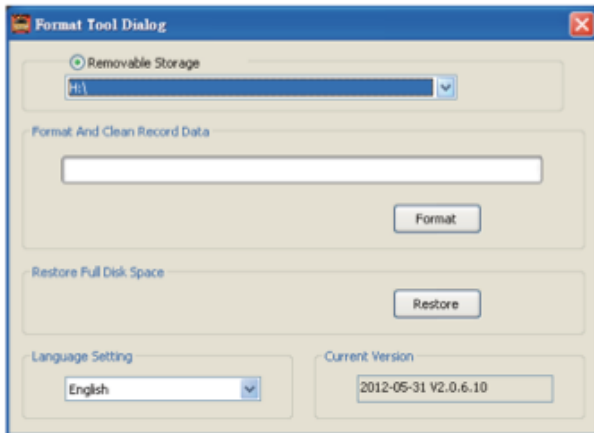
Memory Card

Q: Two ways to format the SD card, format and restore.
When should you "format" or "restore" the Micro SD CARD?
Ans:

- "Format" Micro SD card:** When you use the Micro SD card for the very first time or a brand new card, you should format it in order to use it correctly.
- "Restore" Micro SD card:** When you have backup the recorded files into PC and want to use the Micro SD card for other purposes, you have to restore it first so it can be used correctly.

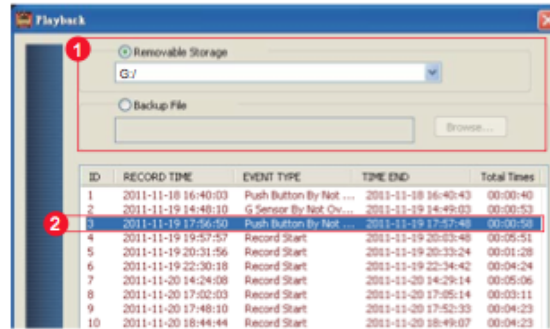


Format



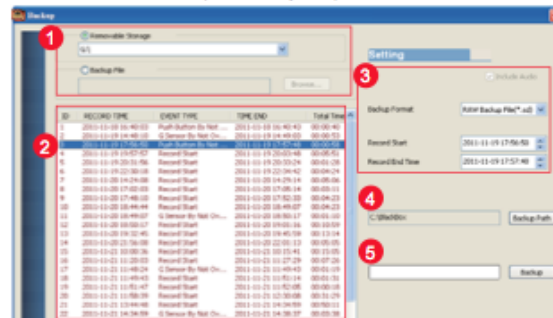
Record Playback

- Playback** Step by Step:
- Select the origin for the Storage
 - Select the recorded file which you want to playback



Disk Backup

- Backup** Step by Step:
- Select the origin for the Micro SD card
 - Select the recorded file which you want to backup
 - Choose the backup file format
 - Backup Path: Select your backup destination
 - Start backup the file to your specified destination



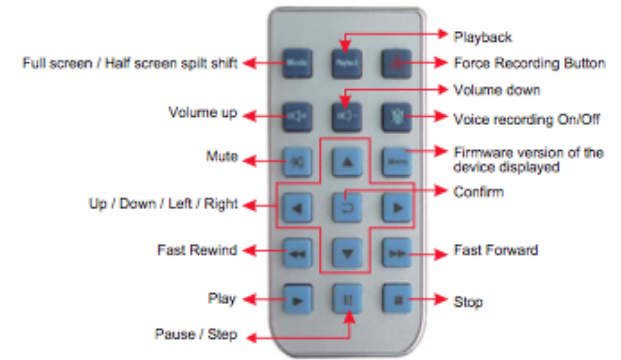
Record Format and Display Configuration

One side of card translator is plug into Micro SD card, the other one is plug into USB plot before recording. Record format and display of the device can be set by configuration of PC client. After setting completed, the Micro SD card can plug into the device and start recording again.

Configuration



Remote Controller



Introduction of OSD Interface

Video output from connecting TV-OUT line to the device

- When turns to Live screen, it could click "MODE" via remote control to switch CH1(Front View) or CH2(Inner View), dual CH display with GPS information as shown below:



- Live View



- (R1): Backward Facing Lens Recording.
- (R2): Forward Facing Lens Recording.
- Event record (R3)
 - Normal Record
 - Force Record
 - G-Sensor Triggered Record
- (R4): GPS / (R4): No GPS signal
- (R5): Audio Record on / (R5): Audio Record off